



Engineers
Scientists
Consultants

November 23, 2010

Mr. John Morisette
Northeast Utilities Services Company
107 Seldon Street, NUE2
Berlin, Connecticut 06037

888 Worcester Street
Suite 240
Wellesley
Massachusetts
02482
p 781.431.0500
f 781.431.7434

**Re: *Sheffield Island Spartina Restoration Monitoring Effort*
*ESS Project No. N345-011.06***

Dear Mr. Morisette,

As you are aware, on July 9, 2010 ESS Group, Inc. (ESS) conducted a site visit to Sheffield Island, CT to monitor the progress of the *Spartina alterniflora* planted as part of the LIRC mitigation efforts. The purpose of this visit was to re-evaluate the progress of the *S. alterniflora* that was planted in August of 2008 by Gary Wetmore and NEXANS after the installation of the Long Island Replacement Cables (LIRC). During our 2009 site visits, it was apparent that while the plants had grown to some degree during the second growing season, they were not as mature and robust as we would have hoped.

During our 2010 site visit, only three of the original plugs were found during the inspection. The remainder of the plugs had either died in place or had been washed away during tidal events. The attached photo-log (Attachment A) details the original planting effort and the subsequent monitoring events of 2009 and 2010. At this time, it is not possible to determine what has precluded the *S. alterniflora* restoration from succeeding at the Sheffield Island location. Un-successful Spartina restoration efforts can often be linked to incorrect site elevations and grading; however, pre-and post construction site surveys provided by Northeast Utilities show similar site elevations (Attachment B), and while Spartina plants were never found across the entire construction corridor, the elevations found at the restoration area were similar to the Spartina populated areas east and west of the corridor.

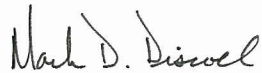
Other factors that may be influencing the poor performance of the plants at this particular location could be linked to wave action and run-off during storm events. Sheffield Island is over-topped during certain high tides and storms and water flow over the replanting area has been observed during construction-related field inspection efforts.



As you know, a field visit has been scheduled with Northeast Utilities, CTDEP, and the National Marine Fisheries Service for November 29, 2010. At that time, we will discuss with the regulatory agencies what options are available for fulfilling the restoration requirements on Sheffield Island. If you have any questions regarding this replanting effort, please contact me at 781.489.1123.

Sincerely,

ESS GROUP, INC.

A handwritten signature in black ink that reads "Mark D. Driscoll".

Mark D. Driscoll
Senior Water Resources Scientist

Attachments Attachment A: Photo Log of Spartina Restoration Activities
 Attachment B: Pre-and post-construction site elevation surveys





Attachment A

Photographic Log of Spartina
Restoration Efforts



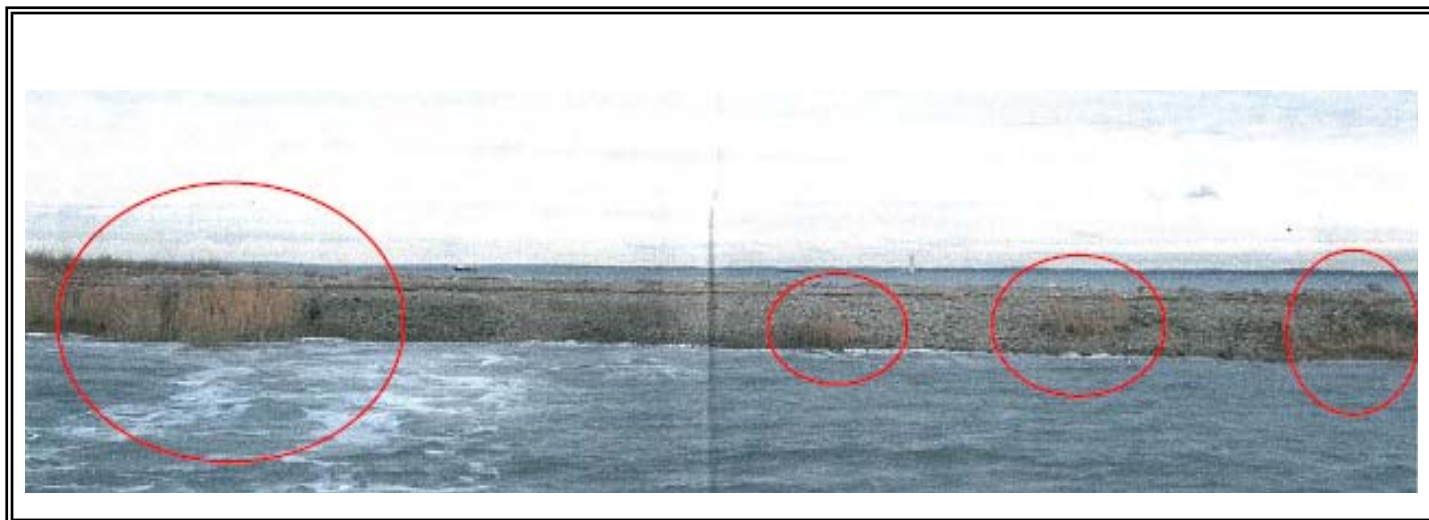


Photo 1: Pre-construction site conditions, provided by Durocher Marine



Photo 2: Post-construction/pre-restoration site conditions, northeast *Spartina alterniflora* bed (May 2008)



Photo 3: Equipment mobilization onto Sheffield Island, avoiding existing *Spartina*.



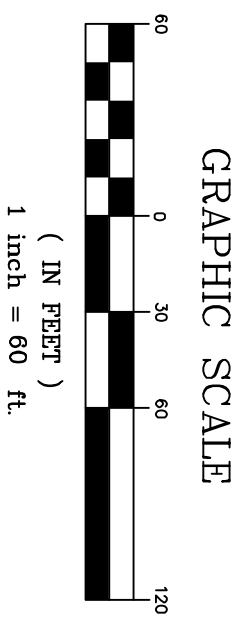
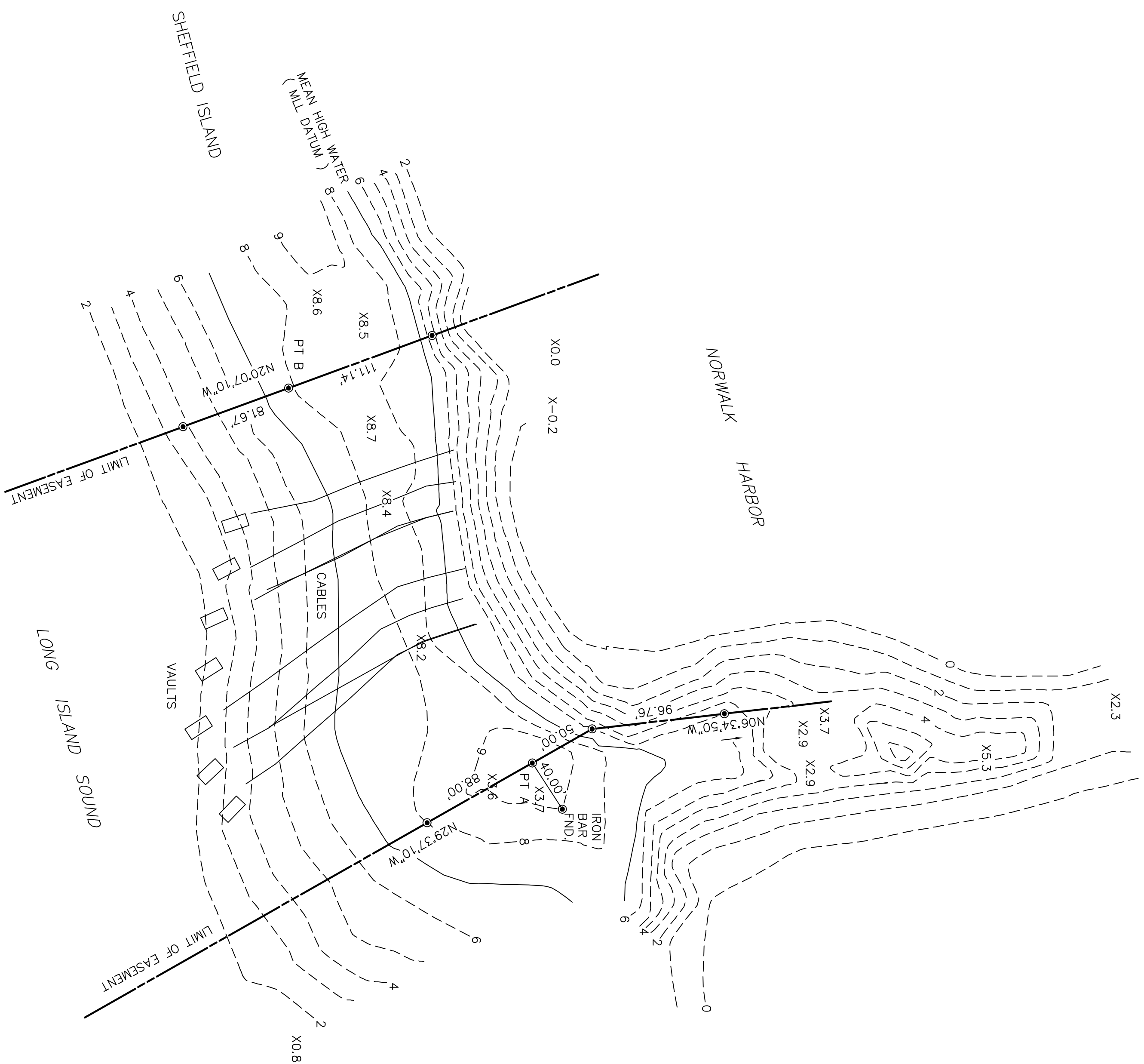
Photo 4: Photograph showing cable corridor immediately after cable burial. Extensive *Spartina* beds present east and west of cable corridor are clearly visible.



Attachment B

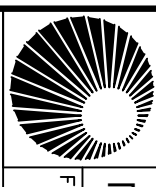
Pre and Post-Construction Survey Drawings





GRAPHIC SCALE

- MAP NOTES:**
1. ● = IRON PIN SET.
 2. CABLE LOCATION DETERMINED FROM PAINT MARKS.
 3. FIELDBOOK 1513 PG 14-15,16-18.
 4. SURVEY DATES 05/30/01, 05/14/01, 09/13/02.
 5. CONTOUR INTERVAL, 1 FOOT. DATUM IS MEAN LOWER LOWER WATER, BEING 2.9 FEET BELOW NGVD 1929.
 6. 1927 STATE PLANE COORDINATES, NEW YORK LONG ISLAND ZONE 3104. ELEVATIONS ARE MEAN LOWER LOWER WATER.
- POINT A N: 302159.384 E: 2162787.555 ELEV: 9.80
 POINT B N: 301982.169 E: 2162515.122 ELEV: 8.06



NORTHEAST UTILITIES SERVICE CO.
 FOR THE CONNECTICUT LIGHT & POWER COMPANY
 BERLIN, CONNECTICUT

TITLE
 PLAN OF EASEMENT ACROSS SHEFFIELD ISLAND
 LONG ISLAND SOUND - NORWALK, CT

BY: EFF/JM	CHKD	REV: RRH	REV:
DATE 5/16/2001	DATE	REV 10/15/02	REV
SCALE	MICROFILM DATE	DWG. NO.	22024B
1" = 60'		PROJ. 0-51.292	VS. R-1-9-B