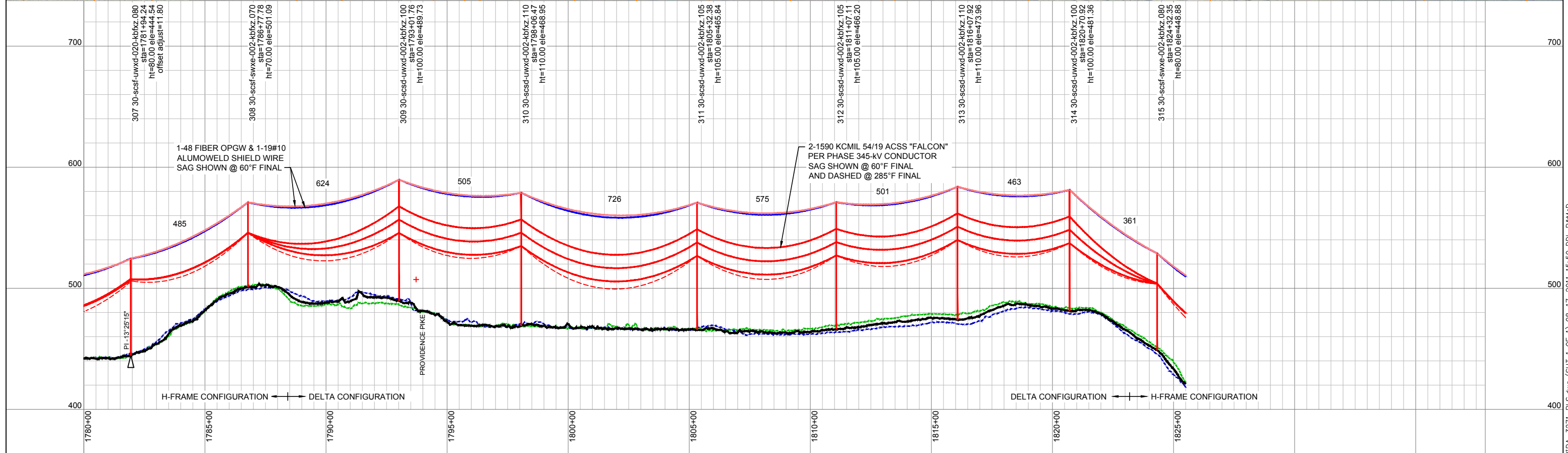
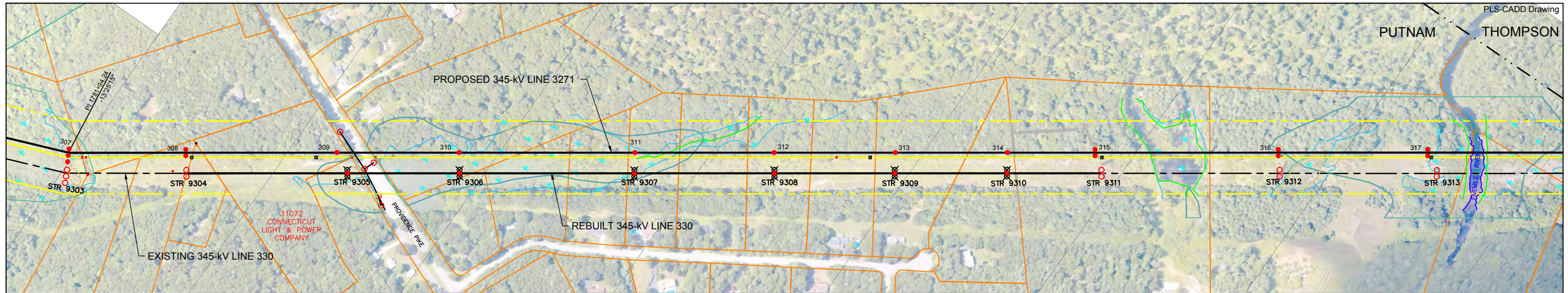
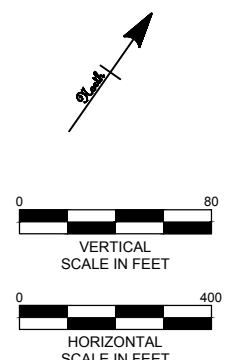


Focus Area E



LEGEND

PROPOSED 345kV CENTERLINE	—	PROPOSED STRUCTURE	●
EXISTING TRANSMISSION CENTERLINE	- - -	STRUCTURE REMAIN	○
EXISTING DISTRIBUTION CENTERLINE	- - - - -	STRUCTURE REMOVE	⊗
LINE OF LOCATION	—	WIRE CROSSING	+
EXISTING ROW	—	WETLANDS	
PROPOSED ROW	—	WATER	
PROPERTY LINE	—	GND PROFILE LEFT 26'	—
TOWN/STATE BOUNDARY	—	GND PROFILE CENTER	—
		GND PROFILE RIGHT 26'	—
		EXISTING GUY EASEMENT	- - - - -



**PRELIMINARY DESIGN
SUBJECT TO CHANGE**



46197

date 08/17/2011 detailed D. Laursen
designed K. Whisner checked M. Hatfield

NO.	DATE	DESIGN REVISIONS	BY	CHK	APP	APP
A	08/17/11	ISSUED FOR 70% REVIEW.	KEW	RMH		



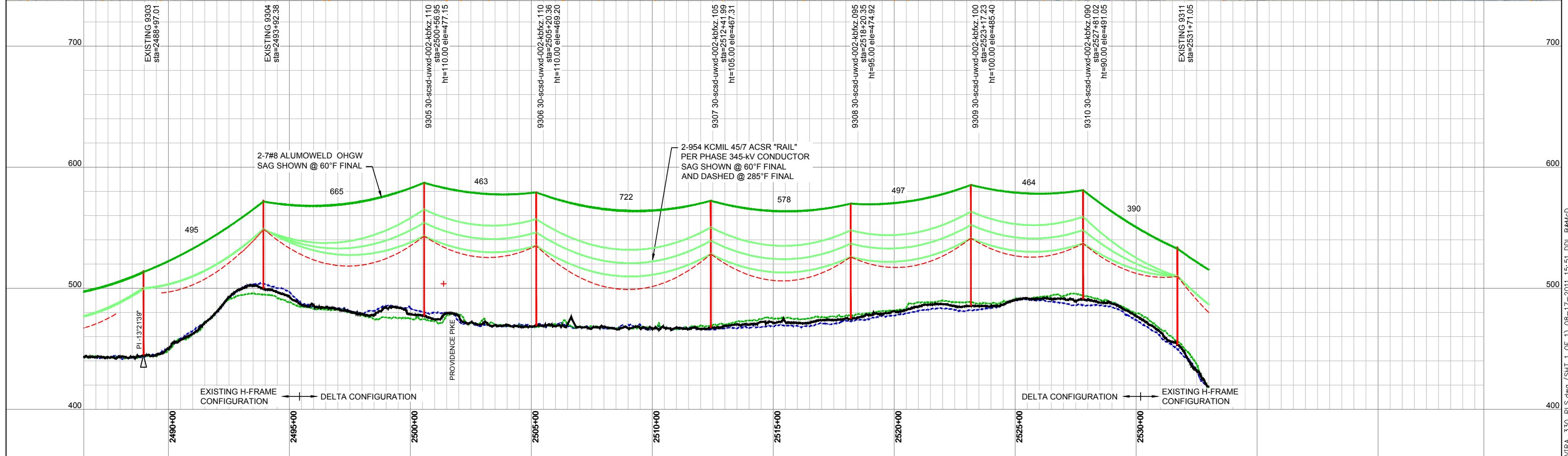
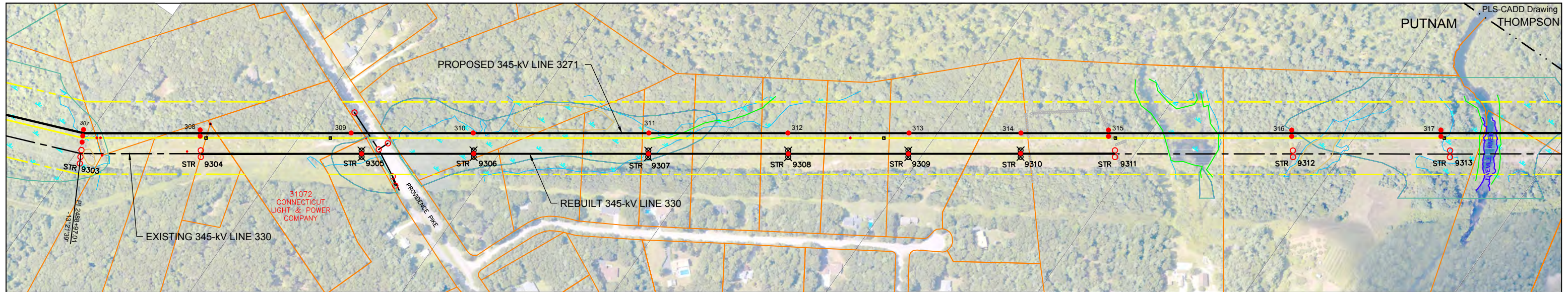
Northeast Utilities Service Co.

FOR CONNECTICUT LIGHT & POWER

TITLE INTERSTATE RELIABILITY PROJECT
ELVIRA HEIGHTS FOCUS AREA E
PLAN & PROFILE SHEET 1 OF 1
LINE 3271

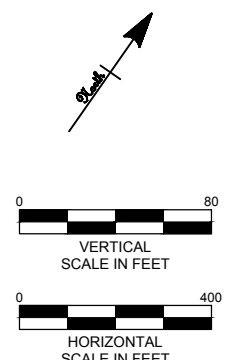
BY BMcD	CHKD	APP	APP
DATE 08/17/11	DATE	DATE	DATE
V-SCALE 1"=80'	SIZE B	FIELD BOOK & PAGES	
H-SCALE 1"=400'	V.S.	R.E.DWG. NO.	
R.E. PROJ. NUMBER		NUSCO DWG NO.	

N:\NUSCO\46197 - Interstate\Cadd\VOH\PNP\ELVIRA\3271_PLS.dwg (SHT 1 OF 1) 08-17-2011 15:50 DDL B&MCD



LEGEND

PROPOSED 345kV CENTERLINE	—	PROPOSED STRUCTURE	●
EXISTING TRANSMISSION CENTERLINE	- - -	STRUCTURE REMAIN	○
EXISTING DISTRIBUTION CENTERLINE	- - - - -	STRUCTURE REMOVE	⊗
LINE OF LOCATION	—	WIRE CROSSING	+
EXISTING ROW	—	WETLANDS	
PROPOSED ROW	—	WATER	
PROPERTY LINE	—	GND PROFILE LEFT 26'	---
TOWN/STATE BOUNDARY	—	GND PROFILE CENTER	—
		GND PROFILE RIGHT 26'	---
		EXISTING GUY EASEMENT	- - - - -



**PRELIMINARY DESIGN
SUBJECT TO CHANGE**



Northeast Utilities Service Co.

FOR CONNECTICUT LIGHT & POWER

TITLE INTERSTATE RELIABILITY PROJECT
ELVIRA HEIGHTS FOCUS AREA E
PLAN & PROFILE SHEET 1 OF 1
LINE 330

46197

date 08/17/2011 detailed D. Laursen

designed K. Whisner checked M. Hatfield

BY BMcD	CHKD	APP	APP
DATE 08/17/11	DATE	DATE	DATE
V-SCALE 1":80'	SIZE B	FIELD BOOK & PAGES	
H-SCALE 1":400'	V.S.	R.E.DWG. NO.	
R.E. PROJ. NUMBER		NUSCO DWG NO.	

NO.	DATE	DESIGN REVISIONS	BY	CHK	APP	APP
A	08/17/11	ISSUED FOR 70% REVIEW.	KEW	RMH		

N:\NUSCO\46197 - Interstate\CADD\PNP\ELVIRA\ELVIRA_330_PLS.dwg (SHT 1 OF 1) 08-17-2011 15:51 DDL B&McD